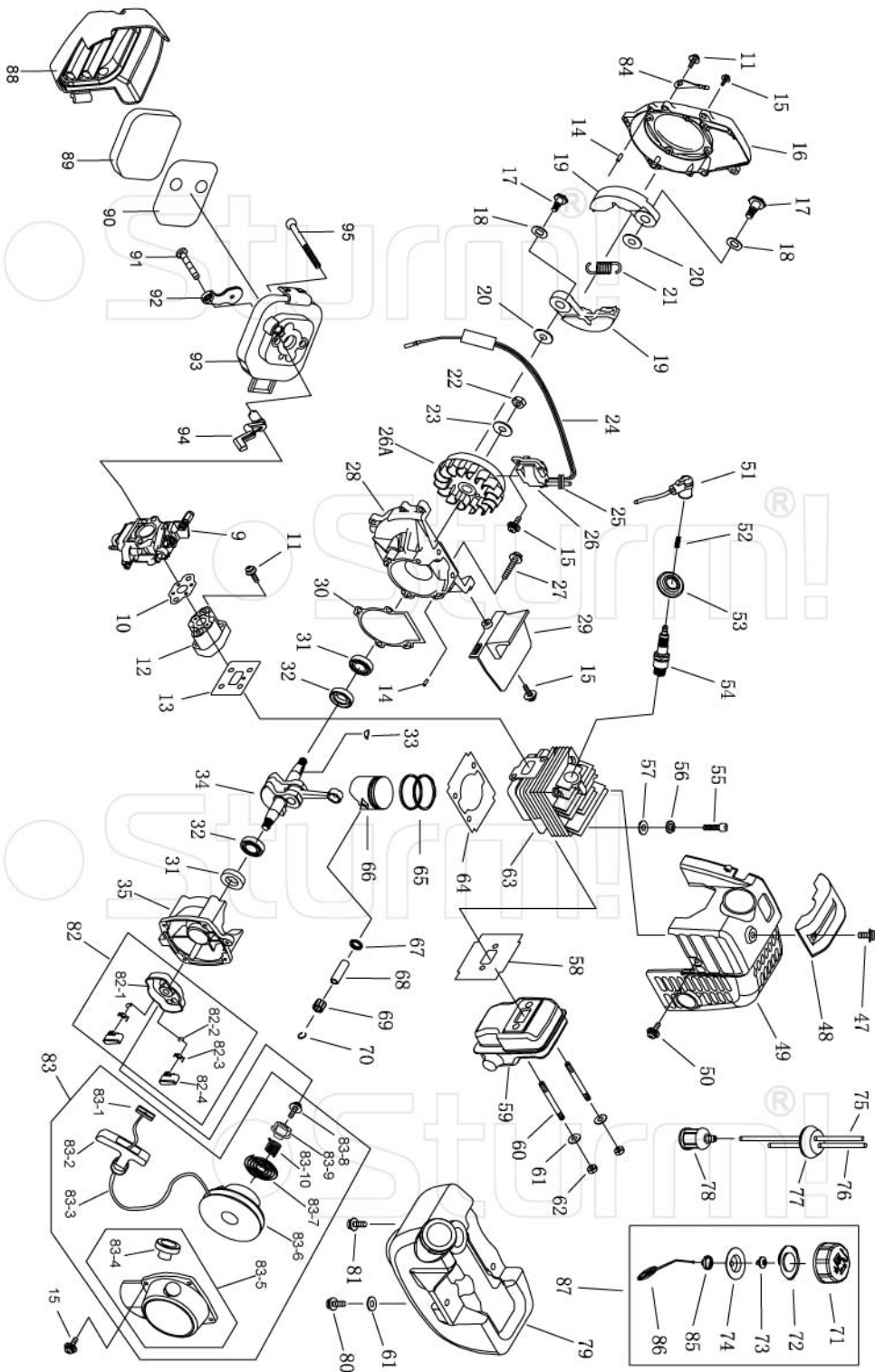


BT8926D

NO.	DESCRIPTION	NO.	DESCRIPTION	NO.	DESCRIPTION
1	GEAR CASE ASSY	31	HARNES CLAMP	61	HANDGRIP
2	STOP RING	32	CLAMP	62	SPRING
3	STOP RING	33	SCREW M5X20	63	BOX, RIGHT
4	BEARING 6000-2RZ/P5	34	NUT M5	64	SCREW ST2.9X18
5	PINION	35	CLUTCH COMP.	65	SCREW M5X30
6	STEEL PLATE	36	CLUTCH DRUM COMP.	66	CABLE COMP.
7	CAPSCREW M6X20	37	STOP RING	67	TUBE
8	WASHER	38	BEARING 6202-2RZ/P5	68	STOP BUTTON COMP.
9	SCREW M5X12	39	STOP RING	69	HANDGRIP
10	BOLT M6X12	40	LINKER	70	SPRING
11	WASHER	41	RUBBER COVER	71	BOX, LEFT
12	GEAR CASE	42	SCREW M5X25	72	NYLON CUTTER HEAD
13	BLADE COVER	43	WASHER	73	CASE
14	BEARING 6000/P5	44	WASHER	74	LEFT NUT
15	GEAR	45	CLAMP B	75	WASHER
16	GEAR SHAFT	46	CLAMP A	76	SPRING
17	BEARING 6002-2RZ/P5	47	WIRE CLAMP BAND	77	NYLON CORD
18	STOP RING	48	HARNES ASS'Y	78	CORD HOLDER
19	HOLDER A	49	BOLT M5X25	79	PLATEN
20	HOLDER B	50	CAP, LOWER	80	COVER
21	WASHER	51	BRACKET	81	BRACKET
22	LEFT NUT	52	HANDLE	82	SCREW M5X30
23	PIN 2X16	53	GRIP LEFT	83	SAFETY GUARD
24	BLADE	54	CAP, UPPER	84	WASHER
25	PIPE COMP.	55	HANDLE	85	SCREW M5X16
26	RUBBER COVER	56	LEVER ASS'Y	86	SCREW ST4.2X16
27	OIL-BEARING	57	SCREW ST2.9X13	87	GUARD
28	DRIVE SHAFT	58	BUTTON	88	BLADE
29	PIPE	59	SPRING	89	GUARD ASS'Y
30	HOLDER ASS'Y	60	CLOCK PIN		

ST20121030-02

Sturm!



ENGINE FOR BT8926D

NO.	DESCRIPTION	NO.	DESCRIPTION	NO.	DESCRIPTION
9	CARBURETOR	50	SCREW M4X12	81	SCREW M5X16
10	GASKET	51	PLUG CAP	82	STARTER PULLEY ASS'Y
11	SCREW M5X20	52	CLICK SPRING	82-1	STARTER REEL
12	INLET MANIFOLD	53	PLUG COVER	82-2	STOP RING
13	CYLINDER WASHER	54	SPARK PLUG	82-3	STARTER PAWL SPRING
14	PIN	55	SCREW M5X20	82-4	STARTER PAWL
15	SCREW M4X16	56	WASHER	83	STARTER
16	FAN COVER	57	WASHER	83-1	GASKET
17	CLUTCH STEP SCREW	58	GASKET	83-2	STARTER HANDLE
18	WASHER	59	MUFFLER COMP	83-3	ROPE
19	CLUTCH SHOE COMP	60	BOLT	83-4	ROPE GUIDE
20	WASHER	61	WASHER	83-5	RECOIL STARTER BODY
21	CLUTCH SPRING	62	NUT M5	83-6	STARTER ROPE REEL
22	NUT M8X1	63	CYLINDER	83-7	RECOIL SPRING
23	WASHER	64	CYLINDER WASHER	83-8	SCREW
24	STOP CORD COMP	65	PISTON RING	83-9	START RATCHET
25	PRIMARY CORD GROMMET	66	PISTON	83-10	EASY START COIL-SPRING
26	MAGNETO STATOR	67	STOP RING	84	FLASH PAN
26A	MAGNETO ROTOR	68	PISTON PIN	85	LID
27	SCREW M5X25	69	NEEDLE BEARING	86	CHAIN
28	FRONT HALF CRANK CASE	70	PISTON PIN CIRCLET	87	FUEL TANK LID COMP
29	GUIDE PLATE	71	FUEL TANK LID	88	CLEANER OUTSIDE COVER
30	CRANK CASE GASKET	72	GASKET	89	CLEANER ELEMENT
31	OIL SEAL	73	AIRINLET MOUTH	90	DEFENDER FOR CLEANER ELEMENT
32	BALL BEARING 6001/P5	74	INSIDE COVER	91	SCREW ST.4.2X12-F-H
33	KEY	75	OUTLET FUEL PIPE	92	CHOKE
34	CRANK SHAFT COMP	76	INLET FUEL PIPE	93	CLEANER INSIDE COVER
35	REAR HALF CRANK CASE	77	PRIMARY CORD GROMMET	94	CHOKE HANDLE
47	SCREW M5X14	78	CLEANER	95	SCREW M5X55
48	COVER	79	FUEL TANK		
49	ENGINE COVER	80	SCREW M5X16		

ST20121030-02

Sturm!